


Department of Engineering  
Dan Gaillet, P.E., County Engineer

3137 South Liberty Street, Canton, MS 39046  
Office (601) 790-2525 FAX (601) 859-3430

MEMORANDUM

August 1, 2018

To: Sheila Jones, Supervisor, District I  
Trey Baxter, Supervisor, District II  
Gerald Steen, Supervisor, District III  
David Bishop, Supervisor, District IV  
Paul Griffin, Supervisor, District V

From: Dan Gaillet, P.E.  
County Engineer 

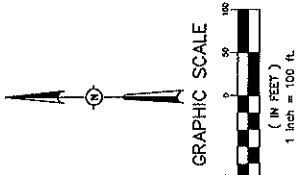
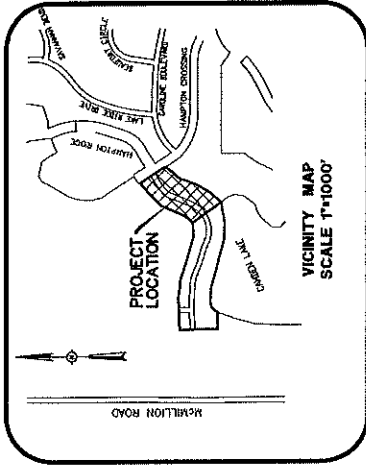
Re: Final Plats  
Camden Pointe 3A and 3B of Caroline

The Engineering Department recommends approval of Caroline, LLC Final Plats of Camden Pointe 3A and 3B. Phase 3A is approximately 8.2 acres containing 30 lots. Phase 3B is approximately 1.9 acres containing 18 lots.

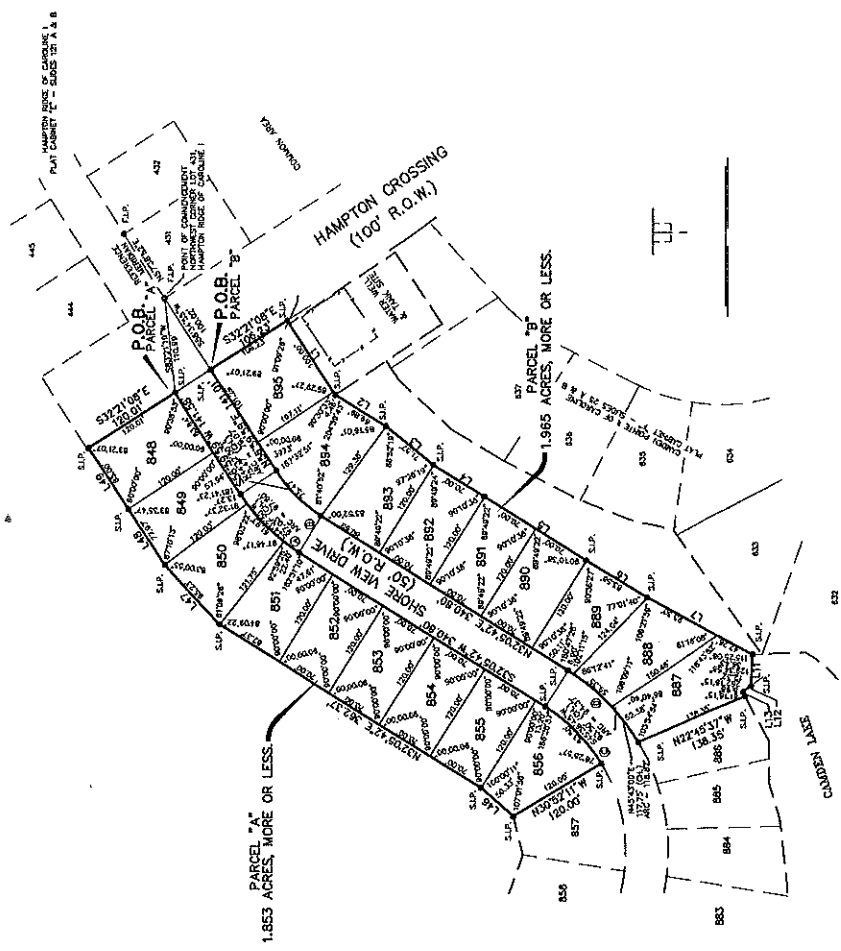
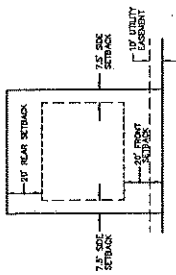
A Letter of Credit has been issued for final paving of Phases 3A and 3B.

# CAMDEN POINTE IIIb OF CAROLINE SITUATED IN THE SOUTHEAST 1/4 OF THE SOUTHWEST 1/4 OF SECTION 11, TOWNSHIP 8 NORTH - RANGE 1 EAST MADISON COUNTY, MISSISSIPPI

PLATTED & SURVEYED BY  
**H D LANG AND ASSOCIATES, INC.**  
ENGINEERS / LAND SURVEYORS  
4089 NORTH STATE STREET  
JACKSON, MISSISSIPPI  
601 362-4896



- NOTES:**
1. THIS SUBDIVISION LIES WITHIN THE LIMITS ESTABLISHED FOR THE CAMDEN POINTE IIIb OF CAROLINE PLAT 17, 2014.
  2. DIMENSIONS ALONG CURVES ARE CHORD DISTANCES.
  3. SURVEY CLASSIFICATION: "B".
  4. REFERENCE MERIDIAN: NORTH REFERENCED TO THE NORTH LINE LOT 431 OF HAMPTON RIDGE OF CAROLINE I.
  5. IRON PINS SET AT ALL LOT CORNERS.
  6. DATE OF FIELD SURVEY: JUNE 18, 2018.
  7. DATE OF PREPARATION OF PLAT: JULY 9, 2018.
  8. COMMON AREAS AND EASEMENTS SHALL BE MAINTAINED BY THE HOME OWNER AND SHALL BE THE PROPERTY OF THE HOME OWNER, WHOEVER IS APPLICABLE AS OUTLINED IN THE COVENANTS.
  9. F.L.P. DENOTES FOUND 1/2" IRON PIN
  10. S.L.P. DENOTES SET 1/2" IRON PIN



**RIGHT-OF-WAY  
CURVE DATA**

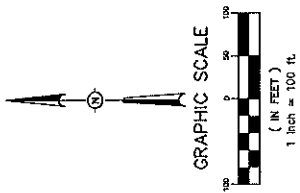
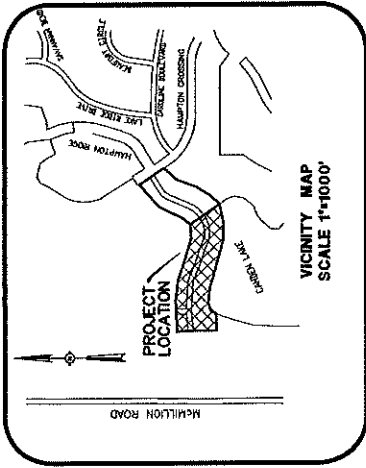
①	215.17'	④	235.17'
②	224.27'	⑤	234.27'
③	224.27'	⑥	234.27'
⑦	224.27'	⑧	234.27'
⑨	224.27'	⑩	234.27'
⑪	224.27'	⑫	234.27'
⑬	224.27'	⑭	234.27'
⑮	224.27'	⑯	234.27'
⑰	224.27'	⑱	234.27'
⑲	224.27'	⑳	234.27'
㉑	224.27'	㉒	234.27'
㉓	224.27'	㉔	234.27'
㉕	224.27'	㉖	234.27'
㉗	224.27'	㉘	234.27'
㉙	224.27'	㉚	234.27'
㉛	224.27'	㉜	234.27'
㉝	224.27'	㉞	234.27'
㉟	224.27'	㊱	234.27'
㊲	224.27'	㊳	234.27'
㊴	224.27'	㊵	234.27'
㊶	224.27'	㊷	234.27'
㊸	224.27'	㊹	234.27'
㊺	224.27'	㊻	234.27'
㊼	224.27'	㊽	234.27'
㊾	224.27'	㊿	234.27'

NUMBER	DESCRIPTION	DISTANCE
1	S. 172° 23' 33" W	18.82'
2	S. 2° 27' 23" W	74.37'
3	S. 2° 27' 23" W	74.37'
4	S. 2° 27' 23" W	74.37'
5	S. 2° 27' 23" W	74.37'
6	S. 2° 27' 23" W	74.37'
7	S. 2° 27' 23" W	74.37'
8	S. 2° 27' 23" W	74.37'
9	S. 2° 27' 23" W	74.37'
10	S. 2° 27' 23" W	74.37'
11	S. 2° 27' 23" W	74.37'
12	S. 2° 27' 23" W	74.37'
13	S. 2° 27' 23" W	74.37'
14	S. 2° 27' 23" W	74.37'
15	S. 2° 27' 23" W	74.37'
16	S. 2° 27' 23" W	74.37'
17	S. 2° 27' 23" W	74.37'
18	S. 2° 27' 23" W	74.37'
19	S. 2° 27' 23" W	74.37'
20	S. 2° 27' 23" W	74.37'
21	S. 2° 27' 23" W	74.37'
22	S. 2° 27' 23" W	74.37'
23	S. 2° 27' 23" W	74.37'
24	S. 2° 27' 23" W	74.37'
25	S. 2° 27' 23" W	74.37'
26	S. 2° 27' 23" W	74.37'
27	S. 2° 27' 23" W	74.37'
28	S. 2° 27' 23" W	74.37'
29	S. 2° 27' 23" W	74.37'
30	S. 2° 27' 23" W	74.37'
31	S. 2° 27' 23" W	74.37'
32	S. 2° 27' 23" W	74.37'
33	S. 2° 27' 23" W	74.37'
34	S. 2° 27' 23" W	74.37'
35	S. 2° 27' 23" W	74.37'
36	S. 2° 27' 23" W	74.37'
37	S. 2° 27' 23" W	74.37'
38	S. 2° 27' 23" W	74.37'
39	S. 2° 27' 23" W	74.37'
40	S. 2° 27' 23" W	74.37'
41	S. 2° 27' 23" W	74.37'
42	S. 2° 27' 23" W	74.37'
43	S. 2° 27' 23" W	74.37'
44	S. 2° 27' 23" W	74.37'
45	S. 2° 27' 23" W	74.37'
46	S. 2° 27' 23" W	74.37'
47	S. 2° 27' 23" W	74.37'
48	S. 2° 27' 23" W	74.37'
49	S. 2° 27' 23" W	74.37'
50	S. 2° 27' 23" W	74.37'
51	S. 2° 27' 23" W	74.37'
52	S. 2° 27' 23" W	74.37'
53	S. 2° 27' 23" W	74.37'
54	S. 2° 27' 23" W	74.37'
55	S. 2° 27' 23" W	74.37'
56	S. 2° 27' 23" W	74.37'
57	S. 2° 27' 23" W	74.37'
58	S. 2° 27' 23" W	74.37'
59	S. 2° 27' 23" W	74.37'
60	S. 2° 27' 23" W	74.37'
61	S. 2° 27' 23" W	74.37'
62	S. 2° 27' 23" W	74.37'
63	S. 2° 27' 23" W	74.37'
64	S. 2° 27' 23" W	74.37'
65	S. 2° 27' 23" W	74.37'
66	S. 2° 27' 23" W	74.37'
67	S. 2° 27' 23" W	74.37'
68	S. 2° 27' 23" W	74.37'
69	S. 2° 27' 23" W	74.37'
70	S. 2° 27' 23" W	74.37'
71	S. 2° 27' 23" W	74.37'
72	S. 2° 27' 23" W	74.37'
73	S. 2° 27' 23" W	74.37'
74	S. 2° 27' 23" W	74.37'
75	S. 2° 27' 23" W	74.37'
76	S. 2° 27' 23" W	74.37'
77	S. 2° 27' 23" W	74.37'
78	S. 2° 27' 23" W	74.37'
79	S. 2° 27' 23" W	74.37'
80	S. 2° 27' 23" W	74.37'
81	S. 2° 27' 23" W	74.37'
82	S. 2° 27' 23" W	74.37'
83	S. 2° 27' 23" W	74.37'
84	S. 2° 27' 23" W	74.37'
85	S. 2° 27' 23" W	74.37'
86	S. 2° 27' 23" W	74.37'
87	S. 2° 27' 23" W	74.37'
88	S. 2° 27' 23" W	74.37'
89	S. 2° 27' 23" W	74.37'
90	S. 2° 27' 23" W	74.37'
91	S. 2° 27' 23" W	74.37'
92	S. 2° 27' 23" W	74.37'
93	S. 2° 27' 23" W	74.37'
94	S. 2° 27' 23" W	74.37'
95	S. 2° 27' 23" W	74.37'
96	S. 2° 27' 23" W	74.37'
97	S. 2° 27' 23" W	74.37'
98	S. 2° 27' 23" W	74.37'
99	S. 2° 27' 23" W	74.37'
100	S. 2° 27' 23" W	74.37'



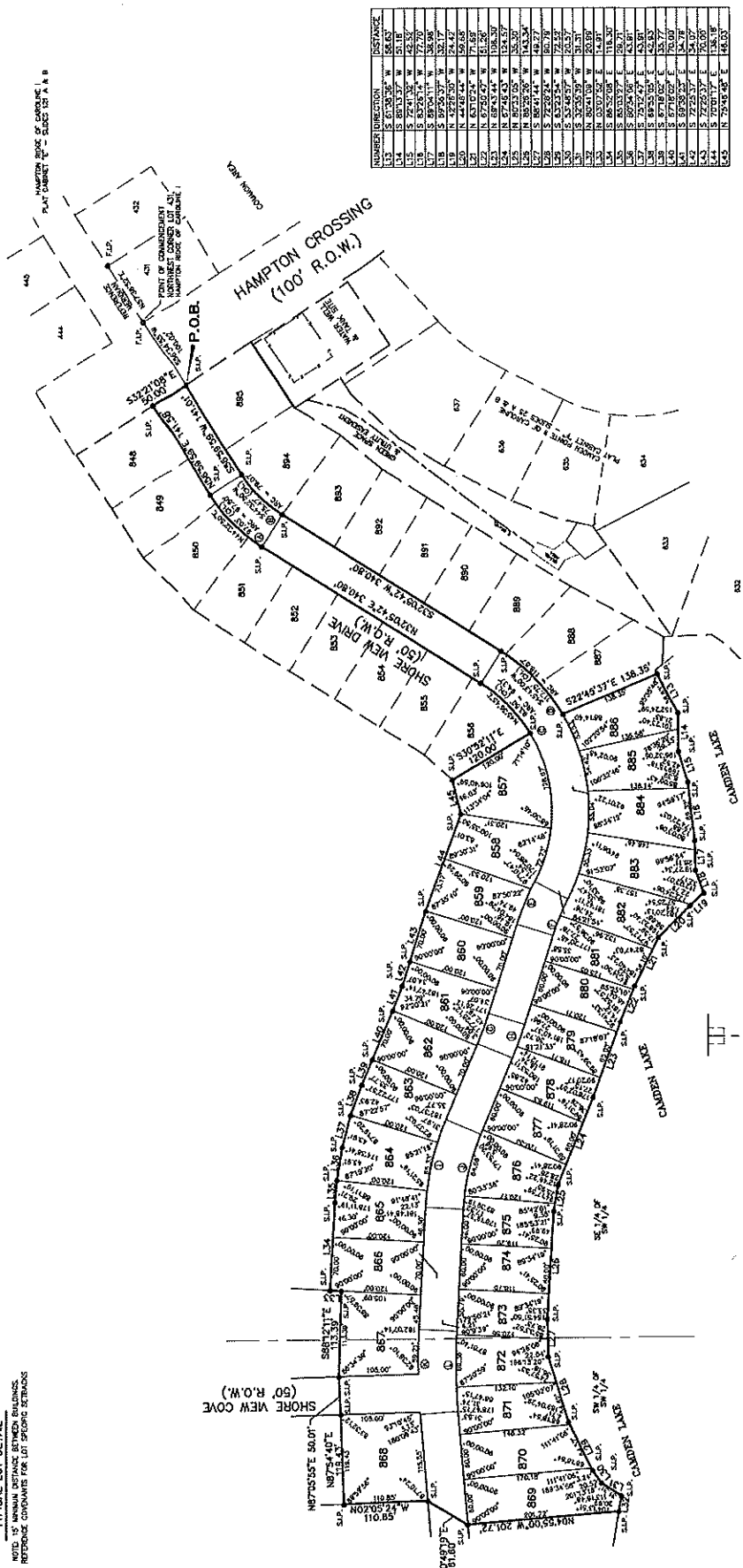
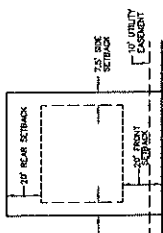
# CAMDEN POINTE IIIa OF CAROLINE SITUATED IN THE SOUTH 1/2 OF THE SOUTHWEST 1/4 OF SECTION 11, TOWNSHIP 8 NORTH - RANGE 1 EAST MADISON COUNTY, MISSISSIPPI

PLATTED & SURVEYED BY  
**H D LANG AND ASSOCIATES, INC.**  
ENGINEERS / LAND SURVEYORS  
4099 NORTH STATE STREET  
JACKSON, MISSISSIPPI  
601 362-4888



RIGHT-OF-WAY CURVE DATA	
① = 800.00'	② = 800.00'
③ = 25.00'	④ = 25.00'
⑤ = 25.00'	⑥ = 25.00'
⑦ = 25.00'	⑧ = 25.00'
⑨ = 25.00'	⑩ = 25.00'
⑪ = 25.00'	⑫ = 25.00'
⑬ = 25.00'	⑭ = 25.00'
⑮ = 25.00'	⑯ = 25.00'
⑰ = 25.00'	⑱ = 25.00'
⑲ = 25.00'	⑳ = 25.00'
㉑ = 25.00'	㉒ = 25.00'
㉓ = 25.00'	㉔ = 25.00'
㉕ = 25.00'	㉖ = 25.00'
㉗ = 25.00'	㉘ = 25.00'
㉙ = 25.00'	㉚ = 25.00'
㉛ = 25.00'	㉜ = 25.00'
㉝ = 25.00'	㉞ = 25.00'
㉟ = 25.00'	㊱ = 25.00'
㊲ = 25.00'	㊳ = 25.00'
㊴ = 25.00'	㊵ = 25.00'
㊶ = 25.00'	㊷ = 25.00'
㊸ = 25.00'	㊹ = 25.00'
㊺ = 25.00'	㊻ = 25.00'
㊼ = 25.00'	㊽ = 25.00'
㊾ = 25.00'	㊿ = 25.00'

- NOTES:**
1. THIS SUBDIVISION LIES WITHIN THE LIMITS ESTABLISHED FOR ZONE 18N (NAD 83) ACCORDING TO FPM MAP NUMBER 2000-10-000-17, EFFECTIVE JANUARY 17, 2001.
  2. DIMENSIONS ALONG CURVES ARE CHORD DISTANCES.
  3. SURVEY CLASSIFICATION DATA REFERENCED TO THE NORTH LINE LOT 431 OF HAMPTON RIDGE OF CAROLINE I.
  4. IRON PINS SET AT ALL LOT CORNERS.
  5. AREA = 8219 ACRES, MORE OR LESS.
  6. DATE OF FIELD SURVEY: JUNE 16, 2016.
  7. DATE OF PREPARATION OF PLAT: JULY 9, 2016.
  8. OWNER'S ASSUMPTION OF ADJACENT LOT OWNER, WHOEVER IS APPLICABLE AS OUTLINED IN THE COVENANTS.
  9. F.I.P. DENOTES FOUND 1/2" IRON PIN  
S.I.P. DENOTES SET 1/2" IRON PIN



NUMBER	DIRECTION	DISTANCE
1.1	S	67.0000' W 58.43'
1.2	S	67.0000' W 58.43'
1.3	S	67.0000' W 58.43'
1.4	S	67.0000' W 58.43'
1.5	S	67.0000' W 58.43'
1.6	S	67.0000' W 58.43'
1.7	S	67.0000' W 58.43'
1.8	S	67.0000' W 58.43'
1.9	S	67.0000' W 58.43'
2.0	S	67.0000' W 58.43'
2.1	S	67.0000' W 58.43'
2.2	S	67.0000' W 58.43'
2.3	S	67.0000' W 58.43'
2.4	S	67.0000' W 58.43'
2.5	S	67.0000' W 58.43'
2.6	S	67.0000' W 58.43'
2.7	S	67.0000' W 58.43'
2.8	S	67.0000' W 58.43'
2.9	S	67.0000' W 58.43'
3.0	S	67.0000' W 58.43'
3.1	S	67.0000' W 58.43'
3.2	S	67.0000' W 58.43'
3.3	S	67.0000' W 58.43'
3.4	S	67.0000' W 58.43'
3.5	S	67.0000' W 58.43'
3.6	S	67.0000' W 58.43'
3.7	S	67.0000' W 58.43'
3.8	S	67.0000' W 58.43'
3.9	S	67.0000' W 58.43'
4.0	S	67.0000' W 58.43'
4.1	S	67.0000' W 58.43'
4.2	S	67.0000' W 58.43'
4.3	S	67.0000' W 58.43'
4.4	S	67.0000' W 58.43'
4.5	S	67.0000' W 58.43'
4.6	S	67.0000' W 58.43'
4.7	S	67.0000' W 58.43'
4.8	S	67.0000' W 58.43'
4.9	S	67.0000' W 58.43'
5.0	S	67.0000' W 58.43'

# CAMDEN POINTE IIIa OF CAROLINE

## SITUATED IN THE SOUTH 1/2 OF THE SOUTHWEST 1/4 OF SECTION 11, TOWNSHIP 8 NORTH - RANGE 1 EAST MADISON COUNTY, MISSISSIPPI

**PLATTED & SURVEYED BY**  
**H D LANG AND ASSOCIATES, INC.**  
ENGINEERS / LAND SURVEYORS  
4089 NORTH STATE STREET  
JACKSON, MISSISSIPPI  
800 362-4888

- NOTES:**
- THIS SUBDIVISION LIES WITHIN THE LIMITS ESTABLISHED FOR ZONE 12 (NO SHADING) ACCORDING TO IRON MAP NUMBER 286980395 F, EFFECTIVE MARCH 17, 2010.
  - DIMENSIONS ALONG CURVES ARE CHORD DISTANCES.
  - SURVEY CLASSIFICATION: "B".
  - REFERENCE MERIDIAN: NORTH REFERENCED TO THE NORTH LINE LOT 431 OF HAMPTON RIDGE OF CAROLINE I.
  - IRON PINS SET AT ALL LOT CORNERS.
  - AREA = 8.215 ACRES, MORE OR LESS.
  - DATE OF FIELD SURVEY: JUNE 16, 2018.
  - DATE OF PREPARATION OF PLAT: JULY 9, 2018.
  - COMMON AREAS AND EASEMENTS SHALL BE MAINTAINED BY THE HOME OWNERS ASSN. OR ADJACENT LOT OWNER, WHICHEVER IS APPLICABLE AS OUTLINED IN THE COVENANTS.
  - F.L.P. DENOTES FOUND 1/2" IRON PIN  
S.L.P. DENOTES SET 1/2" IRON PIN

**SURVEYOR'S CERTIFICATE**  
STATE OF MISSISSIPPI  
COUNTY OF MADISON

I, Donald L. McDonald, Professional Surveyor, do hereby certify that at the request of the Madison County Board of Supervisors, I have surveyed and platted the subdivision shown on this plat in the South 1/2 of the Southwest 1/4 of Section 11, Township 8 North, Range 1 East, Madison County, Mississippi.

Commence at an existing 3/4" iron pin on the eastern right-of-way line of Hampton Iron Pit on the southeast corner of the lot containing the same, and run thence South 89 degrees 59 minutes 59 seconds East for a distance of 141.58 feet to a set 3/4" iron pin on the southeast corner of the lot containing the same, and run thence South 32 degrees 27 minutes 08 seconds East along solid western right-of-way line of Hampton Iron Pit for a distance of 50.00 feet to the POINT OF BEGINNING, containing 8.215 acres, more or less.

Witness my signature this \_\_\_\_\_ day of \_\_\_\_\_, 20\_\_\_\_.

\_\_\_\_\_  
Donald L. McDonald, Professional Surveyor

**SURVEYOR'S CERTIFICATE OF COMPLIANCE**  
STATE OF MISSISSIPPI  
COUNTY OF MADISON

I, Donald L. McDonald, Professional Surveyor, do hereby certify that the monuments and descriptions herein are a true and correct representation of a survey to the accuracy designated in the subdivision regulations for Madison County, Mississippi.

Witness my signature this the \_\_\_\_\_ day of \_\_\_\_\_, 20\_\_\_\_.

\_\_\_\_\_  
Donald L. McDonald, Professional Surveyor

**APPROVAL OF THE BOARD OF SUPERVISORS**  
STATE OF MISSISSIPPI  
COUNTY OF MADISON

I hereby certify that this is a true copy and that this plat was approved by the Board of Supervisors of Madison County in session on the \_\_\_\_\_ day of \_\_\_\_\_, 20\_\_\_\_.

\_\_\_\_\_  
Madison County Board of Supervisors

By: \_\_\_\_\_  
Shelli Jones, Board President

Attest: \_\_\_\_\_  
Romy Lat, Chancery Clerk

**CERTIFICATE OF COMPARISON**  
STATE OF MISSISSIPPI  
COUNTY OF MADISON

We, Romy Lat, Chancery Clerk and Donald L. McDonald, Professional Surveyor, do hereby certify that we have carefully compared this plat of Camden Pointe IIIa of Caroline with the original plat of said plat and find it to be a true and correct copy of said map or plat.

Given under my hand and seal of office this the \_\_\_\_\_ day of \_\_\_\_\_, 20\_\_\_\_.

\_\_\_\_\_  
Donald L. McDonald, PLS

\_\_\_\_\_  
Romy Lat, Chancery Clerk

By: \_\_\_\_\_  
D.C.

**PLANS AND RECORDATION**  
STATE OF MISSISSIPPI  
COUNTY OF MADISON

I, Romy Lat, Clerk of the Chancery Court in and for said County and State, do hereby certify that the final plat of Camden Pointe IIIa of Caroline was filed for record in my office on this the \_\_\_\_\_ day of \_\_\_\_\_, 20\_\_\_\_ and was duly recorded in Plat Cabinet \_\_\_\_\_ at \_\_\_\_\_, Mississippi, at \_\_\_\_\_ of the records of maps and plats of land in Madison County, Mississippi.

Given under my hand and seal of office this the \_\_\_\_\_ day of \_\_\_\_\_, 20\_\_\_\_.

\_\_\_\_\_  
Romy Lat, Chancery Clerk

By: \_\_\_\_\_  
Mark S. Jordan, President

North 45 degrees 59 minutes 59 seconds East for a distance of 141.58 feet to a set 3/4" iron pin on the southeast corner of the lot containing the same, and run thence South 32 degrees 27 minutes 08 seconds East along solid western right-of-way line of Hampton Iron Pit for a distance of 50.00 feet to the POINT OF BEGINNING, containing 8.215 acres, more or less.

Witness my signature this the \_\_\_\_\_ day of \_\_\_\_\_, 20\_\_\_\_.

\_\_\_\_\_  
Donald L. McDonald, Professional Surveyor

**SURVEYOR'S CERTIFICATE OF COMPLIANCE**  
STATE OF MISSISSIPPI  
COUNTY OF MADISON

I, Donald L. McDonald, Professional Surveyor, do hereby certify that the monuments and descriptions herein are a true and correct representation of a survey to the accuracy designated in the subdivision regulations for Madison County, Mississippi.

Witness my signature this the \_\_\_\_\_ day of \_\_\_\_\_, 20\_\_\_\_.

\_\_\_\_\_  
Donald L. McDonald, Professional Surveyor

**CERTIFICATE AND RECORDATION OF OWNER**  
STATE OF MISSISSIPPI  
COUNTY OF MADISON

I, Mark S. Jordan, President of Caroline, LLC, a Mississippi Limited Liability Company, do hereby certify that the plat of Camden Pointe IIIa of Caroline was filed for record in my office on this the \_\_\_\_\_ day of \_\_\_\_\_, 20\_\_\_\_ and was duly recorded in Plat Cabinet \_\_\_\_\_ at \_\_\_\_\_, Mississippi, at \_\_\_\_\_ of the records of maps and plats of land in Madison County, Mississippi.

Given under my hand and seal of office this the \_\_\_\_\_ day of \_\_\_\_\_, 20\_\_\_\_.

\_\_\_\_\_  
Mark S. Jordan, President

**RESERVATION**

The Owner, as named herein, for itself, its successors and assigns, does hereby reserve from this plat the right to install, maintain and operate a water and sewer distribution and collection system, together with a natural gas distribution system, TV cable or other communication system, overhead and below-grade, on this plat, provided, however, the exercise of such rights shall not be deemed to constitute an abandonment of the Owner's rights herein reserved in said easements, rights-of-way, streets, avenues and boulevards, and the same shall be subject to the reservation of said rights.

Owner does hereby expressly retain ownership for itself, its successors and assigns, any and all sewer lines, water lines, connections, tops, manholes, pipes, valves, fittings and any and all other items that may be used in connection with or attached to said water or sewer lines, and any other items that may be used in connection with or attached to or used in said natural gas distribution system, or TV cable, or other communication cable system, and any other items that may be used in connection with or attached to or used in said right-of-way, streets, avenues, boulevards, private drive, and common areas as shown on said plat.

Witness my signature this the \_\_\_\_\_ day of \_\_\_\_\_, 20\_\_\_\_.

\_\_\_\_\_  
Caroline, LLC, a Mississippi Limited Liability Company